

# Mossad

- David Alt

Rubato "Ma" Pedal ( F )

Solo

ALAP



INTRO

♩ = 176

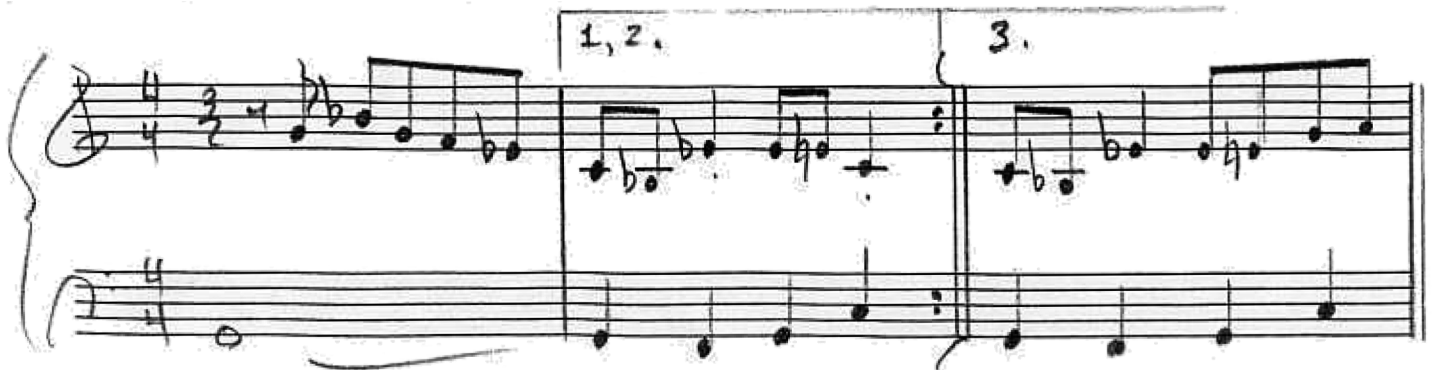
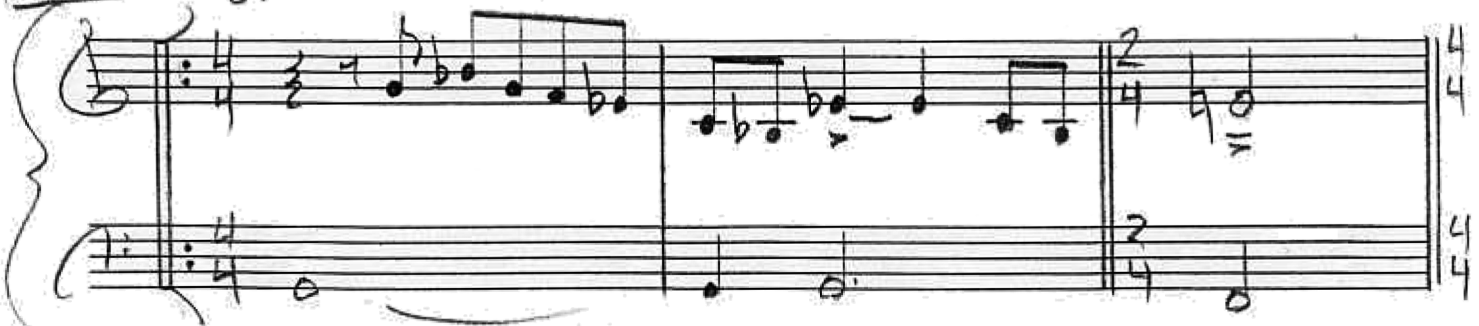


groove



HEAD

3X



Mossad - 2 - -D. Alt

Handwritten musical notation for the first system. It consists of two staves. The upper staff is in treble clef with a key signature of one flat (Bb) and a 4/4 time signature. The lower staff is in bass clef. The music features a melodic line in the upper staff with a fermata over the first measure and a repeat sign at the end. The bass line provides harmonic support with a long note in the first measure and a walking bass line in the second measure.

Handwritten musical notation for the second system. It consists of two staves. The upper staff is in treble clef with a key signature of one flat (Bb) and a 4/4 time signature. The lower staff is in bass clef. The system is divided into two measures by a double bar line. The first measure is marked with a '1.' above it and contains a melodic phrase. The second measure is marked with a '2.' above it and contains a continuation of the melodic phrase. The bass line is simple and accompanimental.

Handwritten musical notation for the third system. It consists of two staves. The upper staff is in treble clef with a key signature of one flat (Bb) and a 4/4 time signature. The lower staff is in bass clef. The system is marked with '4x' at the beginning. The music features a melodic line in the upper staff with a fermata over the first measure and a repeat sign at the end. The bass line provides harmonic support with a long note in the first measure and a walking bass line in the second measure.

Handwritten musical notation for the fourth system. It consists of two staves. The upper staff is in treble clef with a key signature of one flat (Bb) and a 4/4 time signature. The lower staff is in bass clef. The system is divided into two measures by a double bar line. The first measure is marked with '1,2,3' above it and contains a melodic phrase. The second measure is marked with '4' above it and contains a continuation of the melodic phrase. The bass line is simple and accompanimental.